

## Supplementary article data

# Rotational deformities of the long bones can be corrected with rotationally guided growth during the growth phase

## A study in rabbits

Mutlu COBANOGLU <sup>1</sup>, Emre CULLU <sup>1</sup>, Figen Sevil KILIMCI <sup>2</sup>, Mehmet Kamil OCAL <sup>2</sup>, and Rahime YAYGINGUL <sup>3</sup>

<sup>1</sup> Department of Orthopedics and Traumatology, Faculty of Medicine; <sup>2</sup> Department of Anatomy, Faculty of Veterinary Medicine; <sup>3</sup> Department of Surgery, Faculty of Veterinary Medicine, Adnan Menderes University, Aydın, Turkey.

Correspondence: drmutlu79@hotmail.com

Submitted 2015-10-22. Accepted 2016-01-08.

**Table 1.** Intragroup comparison of tibial rotation measurements in both lower extremities. Values are mean (SD)

Tibial rotation	Right	Left	p-value <sup>a</sup>
Group 1	-20 (7.9) (n = 13)	-2.9 (7.2) (n = 7)	< 0.001
Group 2	-23 (4.9) (n = 15)	-26 (6.5) (n = 15)	0.2
Group 3	-21 (6.3) (n = 15)	-9.5 (5.3) (n = 14)	< 0.001

<sup>a</sup> p-values determined with independent-samples t-test.

**Table 2.** Intergroup comparison of tibial rotation measurements in both lower extremities. Values are mean (SD)

Tibial rotation	n	Group 1	Group 2	Group 3	p-value <sup>a</sup>
Right	43	-20 (7.9) (n = 13)	-23 (4.9) (n = 15)	-21 (6.3) (n = 15)	0.5
Left	36	-2.9 (7.2) (n = 7)	-26 (6.5) <sup>b</sup> (n = 15)	-9.5 (5.3) (n = 14)	< 0.001

<sup>a</sup> p-values determined with ANOVA.  
<sup>b</sup> Group 2 was significantly different from group 1 (p < 0.001) and group 3 (p < 0.001).

**Table 5.** Intragroup comparison of tibial length measurements in both lower extremities. Values are mean (SD)

Tibial length	Right	Left	p-value <sup>a</sup>
Group 1	86 (3.1) (n = 15)	82 (3.1) (n = 15)	0.002
Group 2	91 (4.4) (n = 15)	91 (5.1) (n = 14)	0.8
Group 3	99 (4) (n = 15)	98 (5) (n = 15)	0.4

<sup>a</sup> p-values determined with independent-samples t-test.

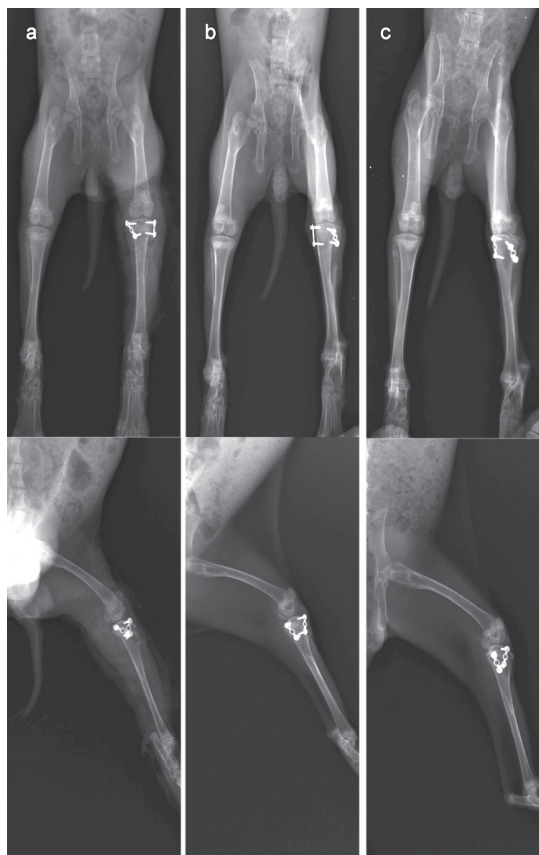


Figure 3. Images of a rabbit in group 1. a. Early postoperative view. b. Postoperatively, 15th day. c. Postoperatively, 30th day.

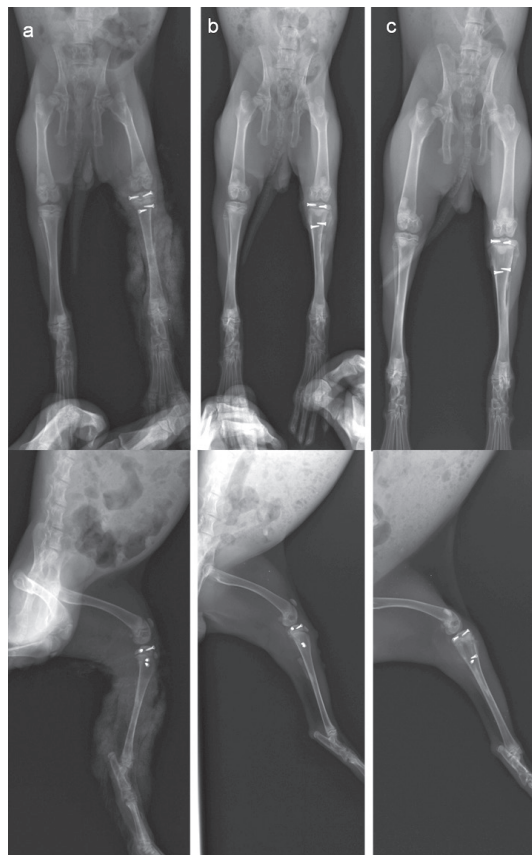


Figure 4. Images of a rabbit in group 2. a. Early postoperative view. b. Postoperatively, 15th day. c. Postoperatively, 30th day.

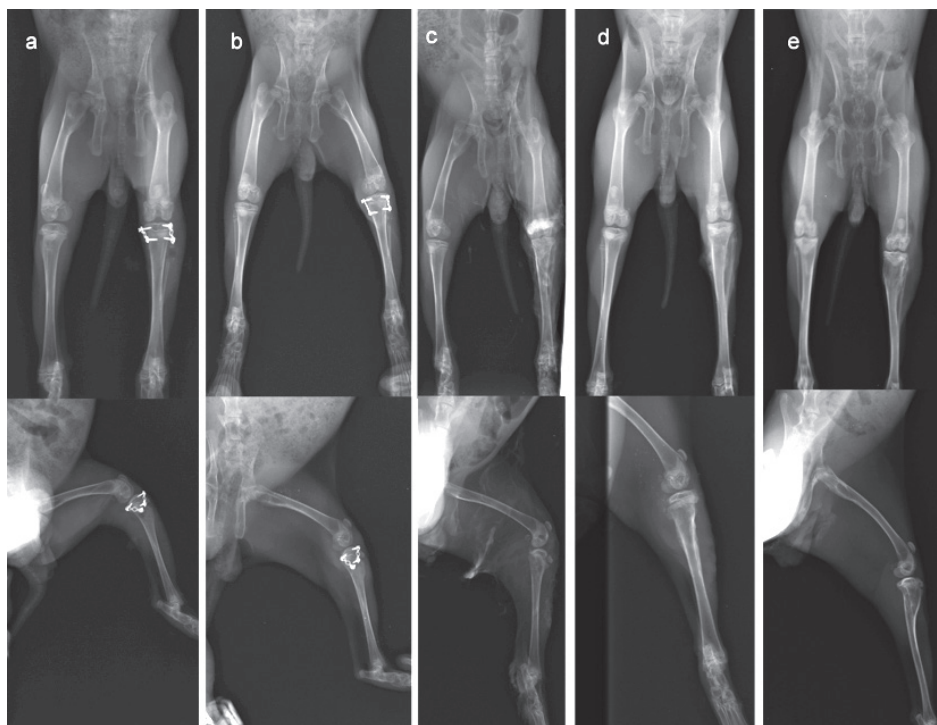


Figure 5. Images of a rabbit in group 3. a. Early postoperative view. b. Postoperatively, 15th day. c. Postoperatively, 30th day (at time of implant removal). d. 15 days after implant removal. e. 30 days after implant removal.