

Supplementary article data

Osseointegrated total knee replacement connected to a lower limb prosthesis: 4 cases

Aditya KHEMKA^{1,2}, Laurent FROSSARD^{3,4}, Sarah J LORD^{1,7}, Belinda BOSLEY²,
and Munjed AL MUDERIS^{1,2,5,6}

¹ School of Medicine, University of Notre Dame Australia, Auburn; ² Norwest Private Hospital, Bella Vista; ³ Queensland University of Technology, Brisbane; ⁴ University of the Sunshine Coast, Maroochydore; ⁵ Macquarie University Hospital, Macquarie; ⁶ The Australian School of Advanced Medicine, Macquarie University, Macquarie; ⁷ National Health and Medical Research Council (NHMRC) Clinical Trials Centre, University of Sydney, Sydney, Australia.
Correspondence: aditya.khemka1@my.nd.edu.au
Submitted 2015-02-25. Accepted 2015-06-01.

Table 2. Individual and group clinical outcomes at baseline and at follow-up

Case	Health-Related Quality of Life			Mobility predictor K-Levels (K0–K4)	Ambulation tests		Activity level (daily average)			
	PCS (pt)	MCS (pt)	Q-TFA (pt)		TUG (s)	6MWT (m)	NofS (#)	TEE (Kj)	AEE (kJ)	PAD (min)
Baseline										
1	26	29	40	0	WB	WB	N/A	N/A	N/A	N/A
2	51	59	43	2	8.8	372	3,495	6.3	1.8	58
3	36	59	54	3	8.6	375	5,494	8.8	1.5	49
4	26	61	40	2	11.0	350	2,713	6.2	0.1	8
Follow-up										
1	80	88	83	4	6.3	512	N/A	N/A	N/A	N/A
2	52	59	95	4	7.8	456	7,267	17	3.8	131
3	51	59	83	3	8.5	412	6,489	11	1.7	58
4	55	61	90	4	8.3	425	19,877	39	1.7	44
Differences between follow-up and baseline										
1	54	60	43	4	-	-	N/A	N/A	N/A	N/A
2	1	0	52	2	-1	84	3,772	10	2	73
3	14.7	0.3	29	0	-0.1	37	995	2.6	0.27	9
4	20	0	50	2	-2.2	75	17,164	32	1.6	36
Median	21.9	0.2	47	-	-1	75	3,772	10.4	1.6	36
Range	53	60	23	-	1.6	47	16,169	30	1.7	64
Mean	25	15	44	-	-1.1	65.3	7,310	15	1.3	39
SD	23	30	10	-	1.1	24.9	8,646	15	0.90	32
P-value	0.07	0.2	0.07	-	0.7	0.07	0.1	0.1	0.1	0.1

SF-36: Short Form 36 health survey; PCS: physical condition summary; MCS: mental condition summary; Q-TFA: questionnaire for persons with a transfemoral amputation, TUG: timed up and go; 6MWT: 6-minute walk test; NofS: number of steps; TEE: total energy expenditure; AEE: active energy expenditure; PAD: physical activity duration; WB: wheelchair-bound; SD: standard deviation.

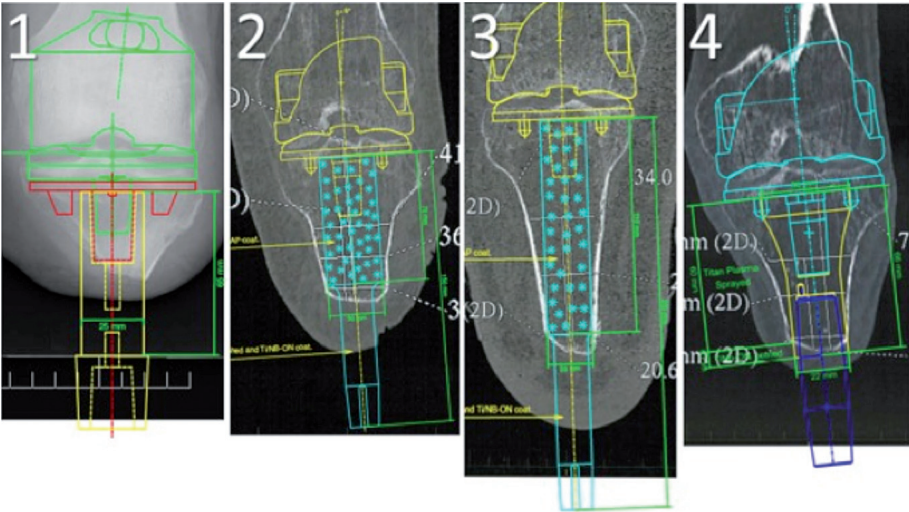


Figure 2. Schematic representation of the shape and dimensions of the TKR and osseointegration implants overlapping computed tomography scans of the residuum for each case.